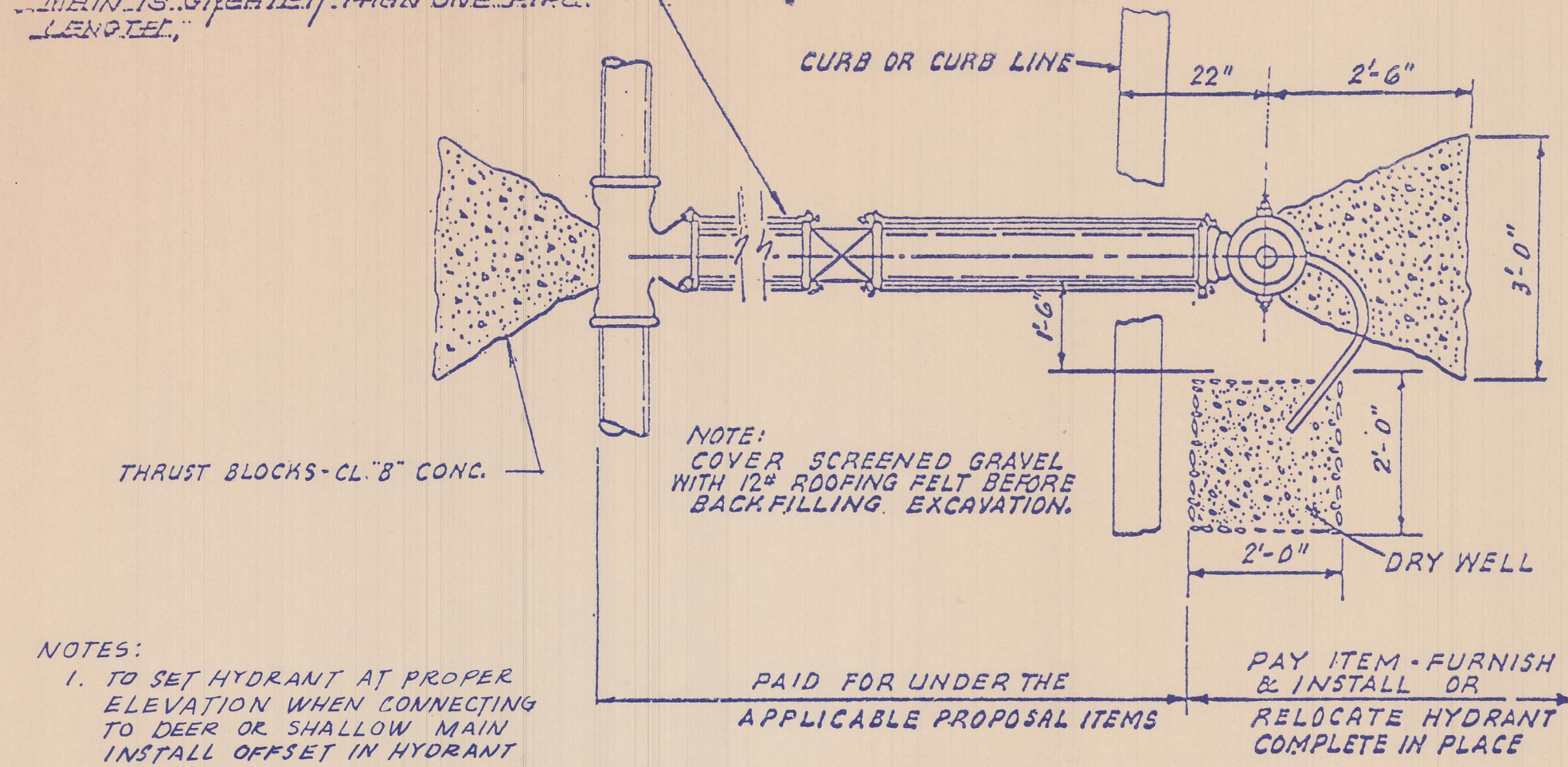


EXTEND THE RODS ONE FULL PIPE LENGTH (18") AND ATTACH TO JOINT, RETAINER GLAND WHEN DISTANCE FROM GATE VALVE TO MAIN IS GREATER THAN ONE PIPE LENGTH.

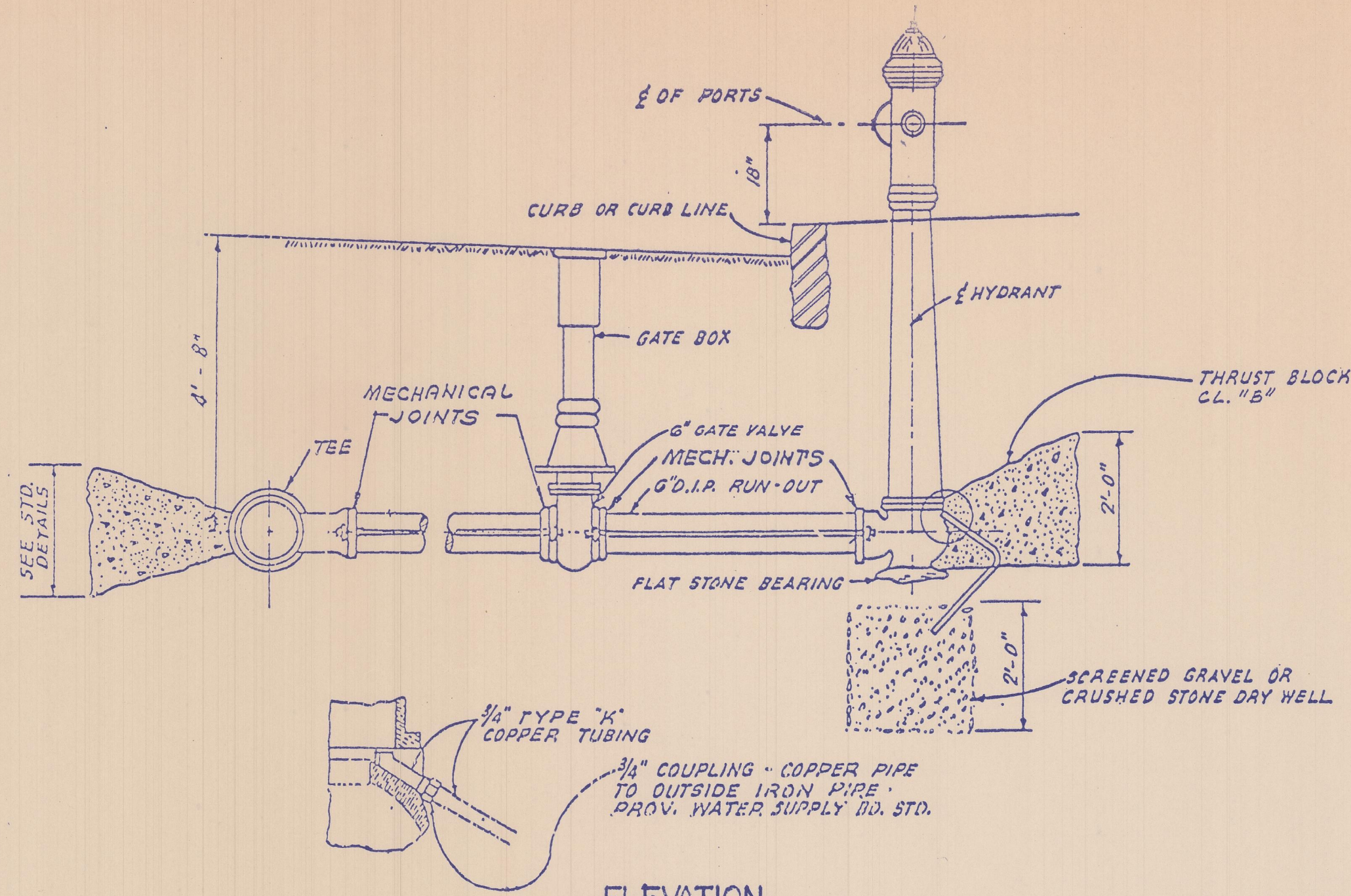
EXTEND THRUST BLOCK SO THAT BEARING WILL BE AGAINST UNDISTURBED EARTH



NOTES:
1. TO SET HYDRANT AT PROPER ELEVATION WHEN CONNECTING TO DEER OR SHALLOW MAIN INSTALL OFFSET IN HYDRANT RUN-OUT.
2. NEW HYDRANT INSTALLATION TO HAVE MECH. JOINT FITTINGS & VALVES WITH TIE RODS. COST OF TIE RODS TO BE INCLUDED IN THE COST OF HYDRANT AND/OR PIPE.

PAID FOR UNDER THE APPLICABLE PROPOSAL ITEMS
PAY ITEM - FURNISH & INSTALL OR RELOCATE HYDRANT COMPLETE IN PLACE

PLAN



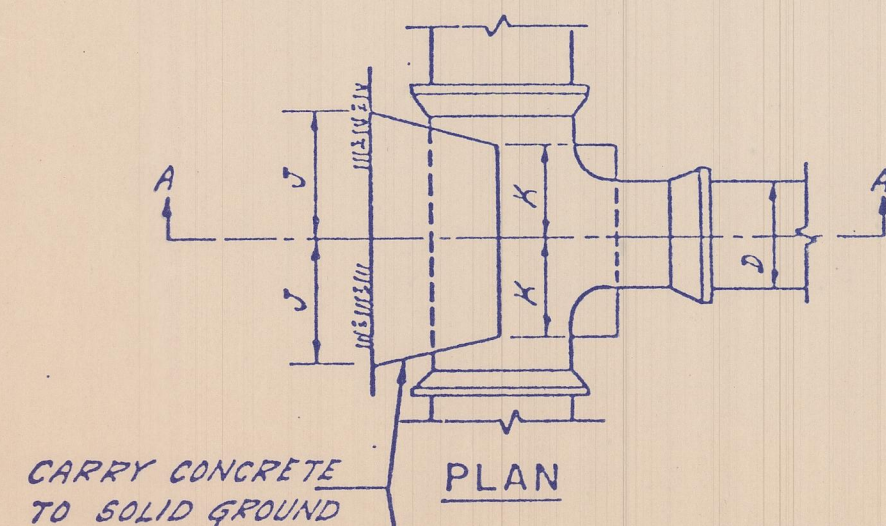
ELEVATION

FIRE HYDRANT INSTALLATION

SCALE: 1/2" = 1'-0"

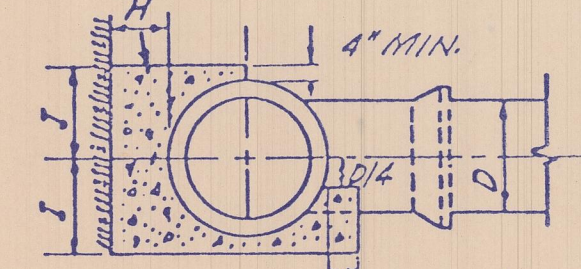
NOTES
1. ALL CONCRETE TO BE CLASS B.
2. BUTTRESS DIMENSIONS SHOWN ARE MINIMUM. DIMENSIONS ARE BASED UPON SOIL BEARING PRESSURE OF 3000 P.S.F. AND STATIC WATER PRESSURE OF 150 P.S.I. WHERE PRESSURE EXCEEDS 150 P.S.I. OR WHERE SOIL BEARING PRESSURE IS LESS THAN 3000 P.S.F.; OR SOIL CONDITIONS OR EXCAVATION LIMITS ENCOUNTERED DURING CONSTRUCTION MAKE IT UNFEASIBLE TO PLACE THRUST BLOCKS AGAINST UNDISTURBED EARTH OF THE PROPER BEARING CAPACITY. THE CONTRACTOR SHALL DESIGN, GET APPROVAL OF, AND PLACE SPECIAL REACTION BLOCKS OF SUFFICIENT WEIGHT TO RESIST THE FULL THRUST OF THE LINE UNDER TEST AND OPERATING PRESSURES. THE DESIGN OF SUCH BLOCKS SHALL BE SUBJECT TO THE APPROVAL OF THE PROVIDENCE WATER SUPPLY BOARD AND THE ENGINEERS AND SHALL BE SUBMITTED TO THE WATER SUPPLY BOARD BEFORE ACTUAL INSTALLATION TAKES PLACE.

SIZE	REINFORCING BARS			
	1/2"	3/8"	1/2"	3/4"
6"	3-6	3-6	3-6	3-6
8"	3-6	3-6	3-6	3-6
10"	3-6	3-6	3-6	3-6
12"	3-6	3-6	3-6	3-6
16"	3-6	3-6	3-6	3-6
20"	3-6	3-6	3-6	3-6
24"	3-6	3-6	3-6	3-6
30"	3-6	3-6	3-6	3-6
36"	3-6	3-6	3-6	3-6

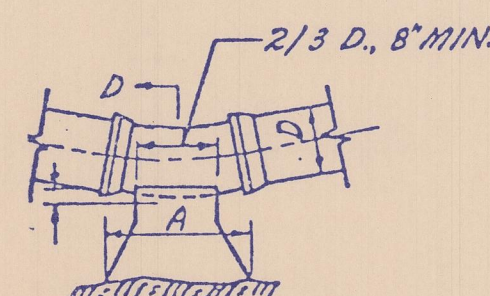


CARRY CONCRETE TO SOLID GROUND

PLAN



SECTION A-A



ELEVATION

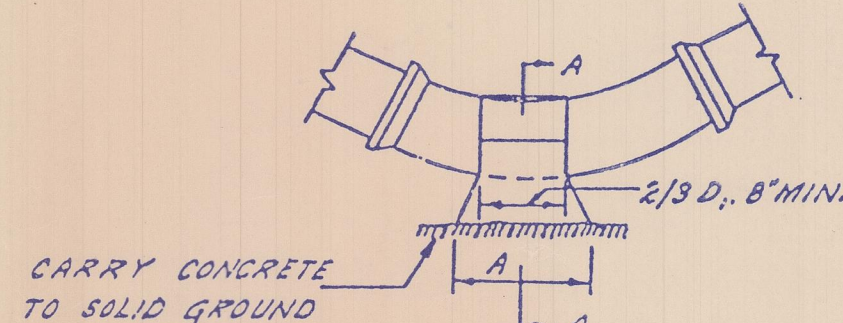
BEND	BUTTRESSES FOR VERTICAL BENDS							
	SIZE							
	6"	8"	10"	12"	16"	20"	24"	30"
1/64	A					1'-8"	2'-0"	2'-6"
	B					1'-0"	1'-2"	1'-3"
	C					1'-0"	1'-1"	1'-2"
1/32	A	6"	8"	10"	1'-0"	1'-4"	1'-8"	2'-0"
	B	7"	8"	9"	10"	1'-0"	1'-4"	1'-7"
	C	7"	7"	8"	9"	10"	1'-0"	1'-2"
1/16	A	9"	1'-0"	1'-6"	1'-9"	2'-3"	3'-0"	4'-2"
	B	7"	7"	8"	10"	1'-2"	1'-4"	1'-7"
	C	7"	7"	8"	9"	10"	1'-0"	1'-2"
1/8	A	1'-3"	1'-8"	2'-1"	2'-6"	3'-4"	4'-2"	5'-0"
	B	7"	8"	9"	11"	1'-3"	1'-6"	1'-9"
	C	7"	8"	10"	11"	1'-3"	1'-6"	1'-9"

SECTION D-D

D	BUTTRESS FOR TEES									
	SIZE OF BRANCH									
	6"	8"	10"	12"	16"	20"	24"	30"	36"	
H	8"	9"	10"	1'-0"	1'-2"	1'-4"	1'-6"	1'-9"	2'-0"	
I	8"	10"	1'-0"	1'-3"	1'-8"	2'-1"	2'-6"	3'-1"	3'-9"	
J	6"	8"	1'-0"	1'-0"	1'-4"	1'-8"	2'-3"	2'-6"	3'-0"	
K	6"	8"	8"	8"	10"	1'-2"	1'-4"	1'-6"	1'-10"	

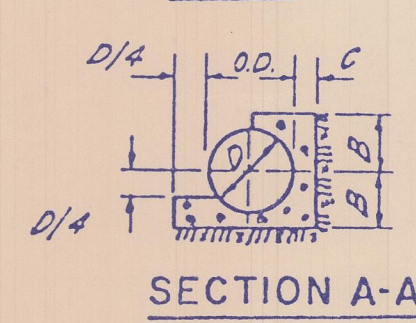
THRUST BLOCK DETAILS

NOT TO SCALE



CARRY CONCRETE TO SOLID GROUND

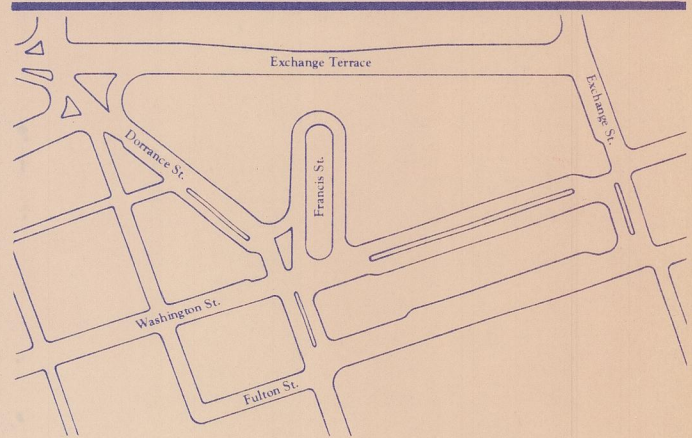
PLAN



SECTION A-A

BEND	BUTTRESSES FOR HORIZONTAL BENDS							
	SIZE							
	6"	8"	10"	12"	16"	20"	24"	30"
1/64	A					1'-8"	2'-0"	2'-6"
	B					1'-0"	1'-2"	1'-3"
	C					1'-0"	1'-1"	1'-2"
1/32	A	6"	8"	10"	1'-0"	1'-4"	1'-8"	2'-0"
	B	7"	8"	9"	10"	1'-0"	1'-4"	1'-7"
	C	7"	7"	8"	9"	10"	1'-0"	1'-2"
1/16	A	9"	1'-0"	1'-6"	1'-9"	2'-3"	3'-0"	4'-2"
	B	7"	8"	9"	10"	1'-0"	1'-4"	1'-7"
	C	7"	7"	8"	9"	10"	1'-0"	1'-2"
1/8	A	1'-3"	1'-8"	2'-1"	2'-6"	3'-4"	4'-2"	5'-0"
	B	7"	8"	9"	11"	1'-3"	1'-6"	1'-9"
	C	7"	8"	10"	11"	1'-3"	1'-6"	1'-9"

no. revision date by



Kennedy Plaza

Transit Mall & Pedestrian Improvement Project

United States Department of Transportation
Urban Mass Transportation Administration
Providence Redevelopment Agency

Albert Veri & Associates, Inc.
60 Ship Street Providence Rhode Island 02903
401.274.1360
landscape architects/urban designers

Wallace Floyd Associates, Inc.
architects/planners
Lee Pare & Associates, Inc.
consulting engineers
Wilbur Smith Associates
traffic engineers
Kay Powell Associates & The Wissing Gengler Group, Inc.
signage consultants

drawing title

UTILITY DETAILS No. 1

date 7-13-83 sheet of
scale AS SHOWN drawing no.
drawn S.P.
checked J.L.B.